



# Ensemble for Early Childhood

2022

*Acting early for equal opportunities*



**30** years of practice in **5** countries have convinced me of the urgent need to give all children the chance to grow in the best living conditions in order to fight against birth inequalities, which affect **1 in 5** children in France.

Supporting early childhood professionals is an international priority, reaffirmed by the French government. The cooperation with universities and research centers in France and abroad, allows our team to identify **the latest scientific knowledges on the child's development** so that we can share them with all professionals working with children.

In **6** years, the association has become **the national center of resources and actions for early childhood**, from the ante-natal period until the age of 6, and enlightens public decisions. Winner of *La France s'engage Foundation* of 2021, it has become **the reference in the French early childhood sector, supporting 100,000 additional beneficiaries each year**. Internationally, our involvement with the *OECD* and *UNESCO* is growing.

Our roadmap shows **high qualitative and quantitative goals** that can be reached thanks to your support. Early childhood deserves the best, and it is a cross-cutting issue. **Together, we will succeed in reducing inequalities as early as the first 1000 days of life!**

**Let's be ambitious for the children, citizens of the world of tomorrow!**



**NATHALIE CASSO-VICARINI**  
*General Delegate of  
Ensemble for Early Childhood*



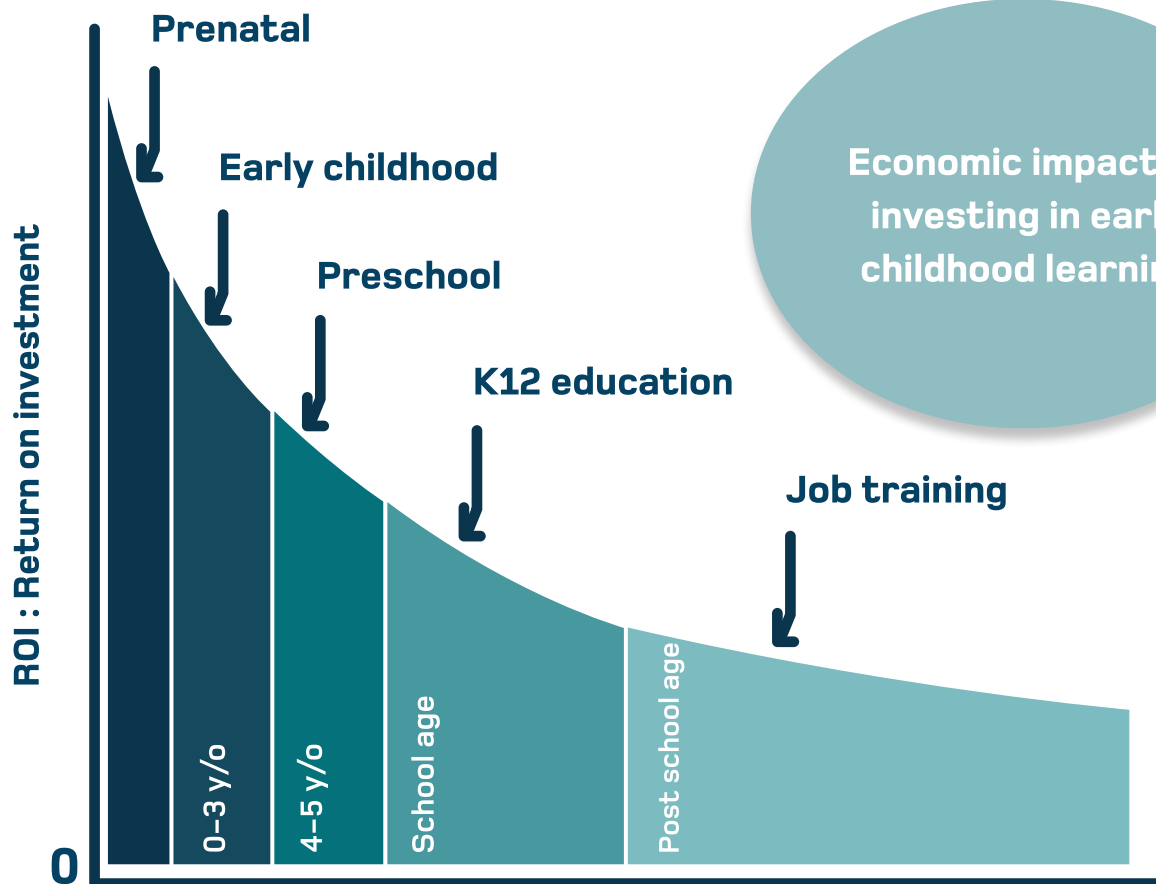




## EARLY CHILDHOOD : A STAKE FOR THE FUTURE

**JAMES HECKMANN**

*NOBEL PRICE OF ECONOMY 2000*



**1€ invested** avoids **13€** spent by societies later on. p. graphique Heckman.



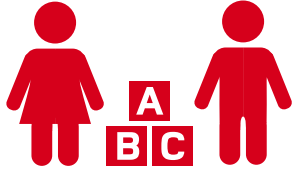
**4** QUALITY EDUCATION



**Target 2 :**

“By 2030, ensure that all girls and boys have access to quality early childhood development, care and pre-primary education so that they are ready for primary education”

ODD 4  
LEADS  
ODD 1



**1** NO POVERTY



**Target 1 :**

“End poverty in all its forms everywhere”





# OUR INNOVATIVE VISION SUPPORTING EARLY CHILDHOOD PROFESSIONALS

The best way to improve the **quality of education** on a large scale is to support those who make it happen every day : early childhood professionals.

This is particularly true in a context where France is facing a severe crisis regarding the number of people working in the early childhood sector:

🌀 France is ranked **27** out of **35** of the OECD countries in terms of the **qualification of early childhood professionals**<sup>1</sup>.

🌀 **75%** of early childhood professionals and parents feel **helpless** and are looking for reliable resources<sup>2</sup>.



---

<sup>1</sup> OECD, "Starting Strong III", A Quality Toolbox for Early Childhood Education and Care, June 2012.  
[https://www.oecd-ilibrary.org/education/starting-strong-iii\\_9789264123564-en](https://www.oecd-ilibrary.org/education/starting-strong-iii_9789264123564-en)

<sup>2</sup> UNAF, 2017



# OUR MISSION

*TO ACT FOR A SYSTEMIC IMPACT*

**Field actions and advocacy**

these two pillars that work together are our DNA!

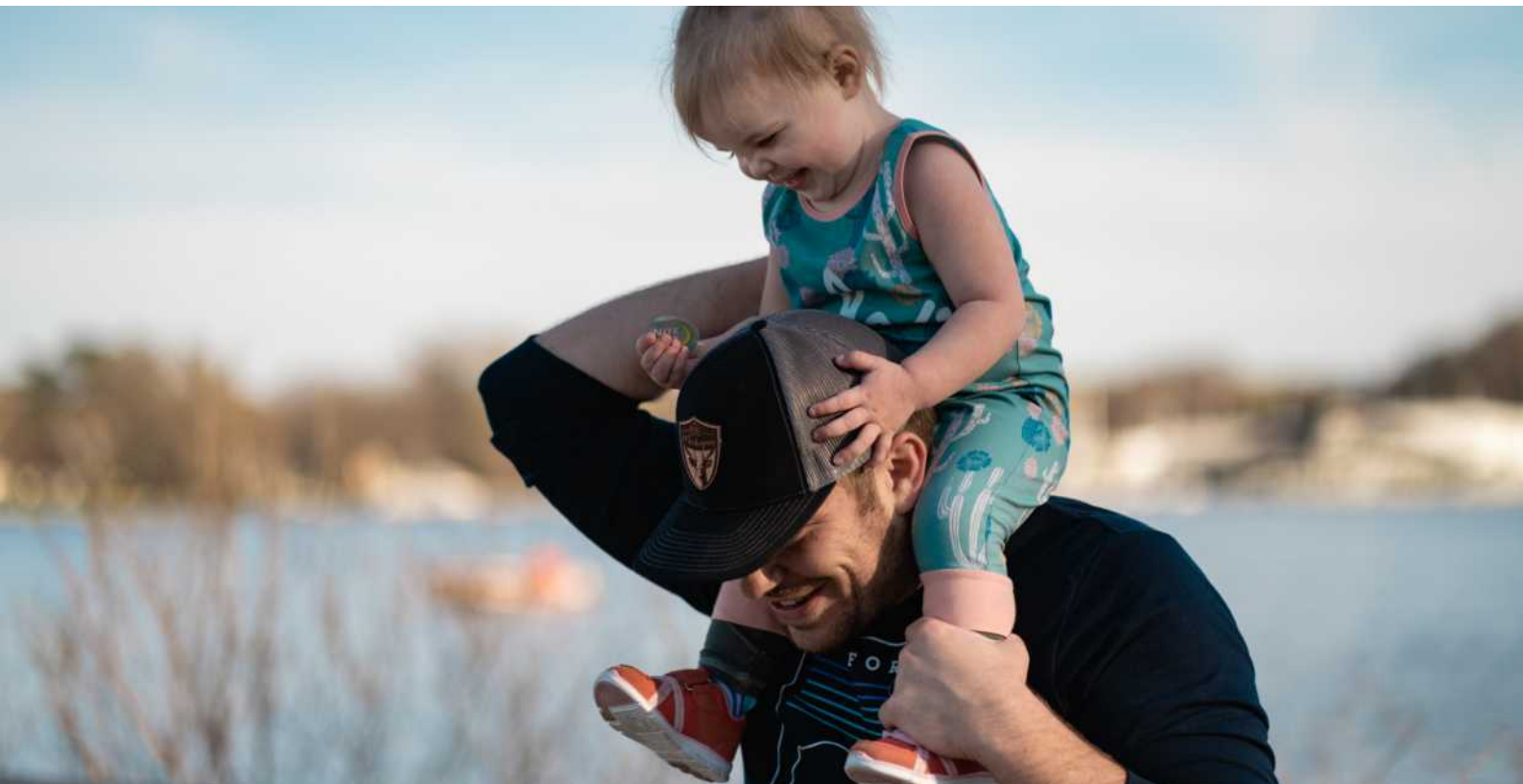
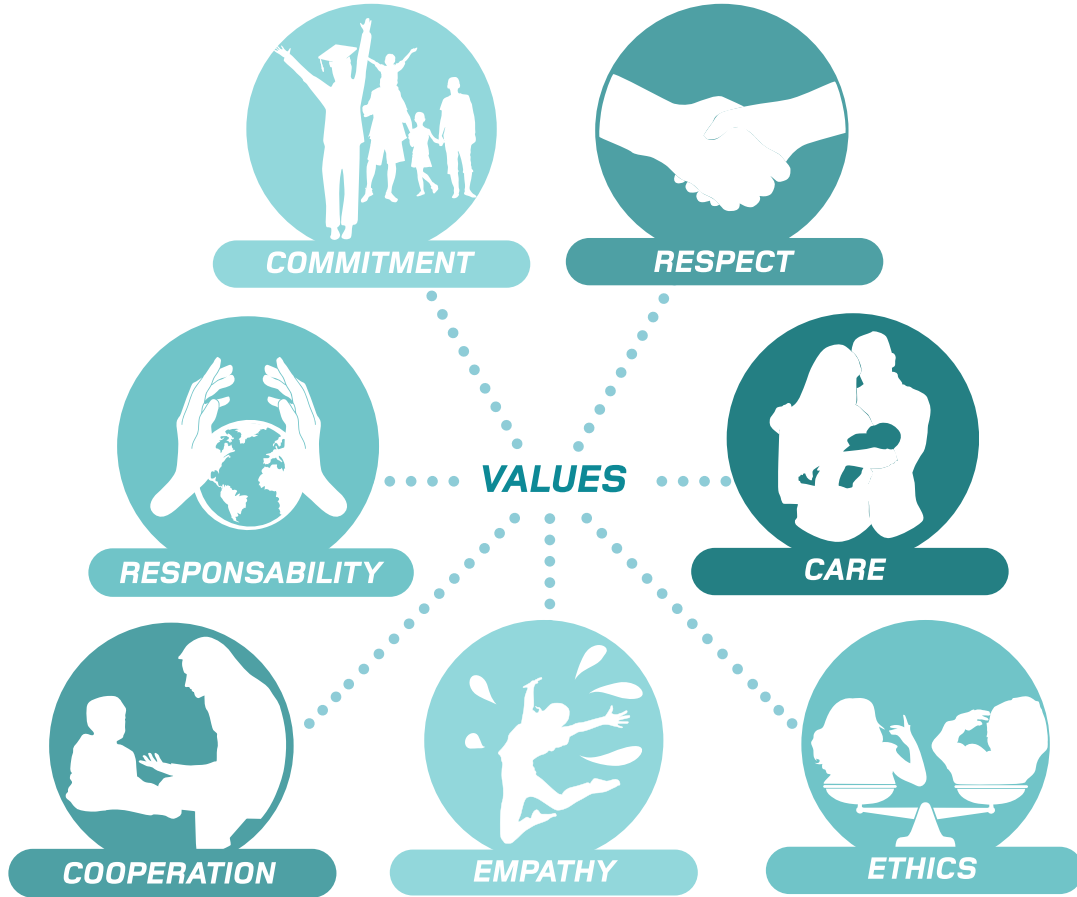


We support early childhood professionals to **continuously improve the quality** of their practices and to give meaning to their work.

We **enlighten** public decisions at the **national and international** levels for a greater consideration of early childhood for the well-being of today and tomorrow's society.



# OUR VALUES







# NOTRE DÉMARCHE

1. ACTION RESEARCH

2. CITIES-WIDE PILOT PROJECTS  
*WITH CULTURAL ADJUSTMENT*

3. HUMAN-SIZED DEPLOYMENT

4. IMPACT EVALUATION

5. ADJUSTMENT

6. LARGE-SCALE DEPLOYMENT





# OUR HISTORY

**2016**

- ⚙ Birth of the association
- ⚙ **1st** international congress with the *OECD*

**2017**

- ⚙ Early childhood and parenting train
- ⚙ Birth of our pedagogical tools: *Dis-moi...!*<sup>1</sup> and *Comprends-moi...!*<sup>2</sup>

**2018**

- ⚙ **4** pilot cities in the *Accompagne-moi...!*<sup>3</sup> approach
- ⚙ **2nd** international congress with the *OECD*

**2019**

- ⚙ Start of the *Accompagne-moi...!*<sup>3</sup> action-research
- ⚙ Participation in the national strategy to fight against child poverty
- ⚙ Participation in the national commission of the first 1000 days

---

<sup>1</sup>Tell me...!

<sup>2</sup>Understand me...!

<sup>3</sup>Support me...!





# 2020

- Birth of *Ensemble pour la Formation*
- **5th** pilot city in the *Accompagne-moi...!*<sup>3</sup>
- **3rd** international congress with the *OECD*



# 2021

- Laureate of *La France s'Engage Foundation*
- MOOC: *Parle-moi..!*<sup>1</sup>
- Opening of the **1st** House of the first 1000 days in Arras
- European campaign *First Years, First Priority*



# 2022

- **4th** international congress with the *OECD*
- Publication of the results of the research-action *Accompagne-moi...!*<sup>3</sup> with the *INSERM*
- World Conference on Early Childhood Care and Education in Tashkent









# OUR TEAM

## EXECUTIVE MANAGEMENT

### HEADQUARTERS

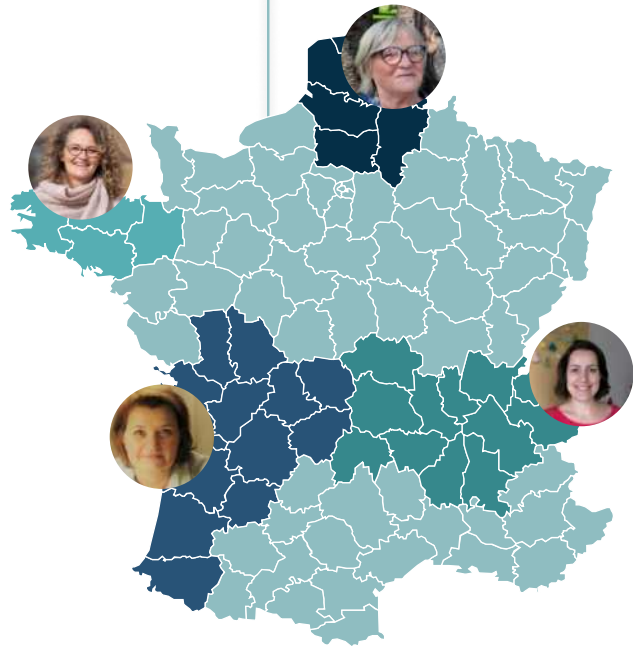
**Actions**  
*operations and network*

**Content**  
*educational ressources and training*

**Courses**  
*communication and partnerships*

**Legal**  
*financial and administrative*

**DELEGATIONS :**  
HAUTS-DE-FRANCE  
BRITTANY  
NOUVELLE-AQUITAINE  
AUVERGNE-RHÔNE ALPES





# THE FIRST 1000 DAYS' HOUSE

1



We support the project leaders of the first 1000 days' House, proposed in the report of the French expert commission of the first 1000 days. The first 1000 days' House offers a global response to the needs of parents and young children through the establishment of peer support groups.

2



**investment cost : 20€ per family per year**



*“What interested me was sharing experiences [...], finding a space of support to understand that one is not alone and [...] sharing an individual moment with my last one.”*

Arras, Marie

*“It brings a lot to the child's development, it makes us feel safe so our children feel safe too.. ”*

Arras, Henri

*“Every meeting is rich, we put children under less stress when we understand them better.”*

Arras, Clément



# ACCOMPAGNE-MOI...! (SUPPORT ME...!)

1



Accompagne-moi...! Support-me...! is a program that is part of social health promotion. It supports the quality of professional practices and contributes to the well-being of young children, parents and early childhood professionals. It is based on innovative tools drawn from scientific research that promote the overall development of the child.

**Investment cost : 65€ per children per year**



*"We became aware of the importance of children's social skills. This has allowed us to rethink our daily practices for a better development of the child and his daily well-being."*

Aurélie, Daycare Rue Neuve

*"Accompagne-Moi...! (Support-me...!) was a great project's discovery, and it gave us additional support to reinforce our daily practices"*

Daycare les Poupins

*"After the Pilou training activity "Wait for your turn", we have observed a greater patience from the children"*

Gabrielle, Daycare Léon Blum



## WHERE DO WE OPERATE ?



 1000 First Days' House

 Accompagne-moi...! (Support-me...!)





# OUR ROADMAP

## OUR AMBITIONS

- Accompany **10%** of early childhood professionals by **2025** that is, approximately **60,000** beneficiaries
- Achieve **95%** of adjustments in educational practices according to **5** key indicators
- Implement **1** additional low and middle income country per year

### REGIONAL DEPLOYMENT



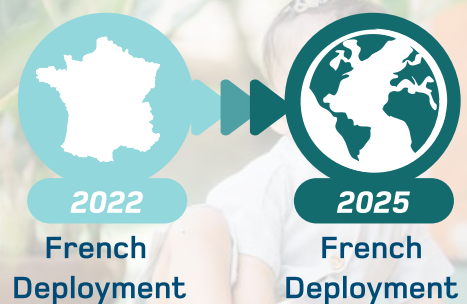
### FIRST 1000 DAYS' HOUSE



### SUPPORT-ME...!



### INTERNATIONAL DEPLOYMENT



### SENSIBILISER

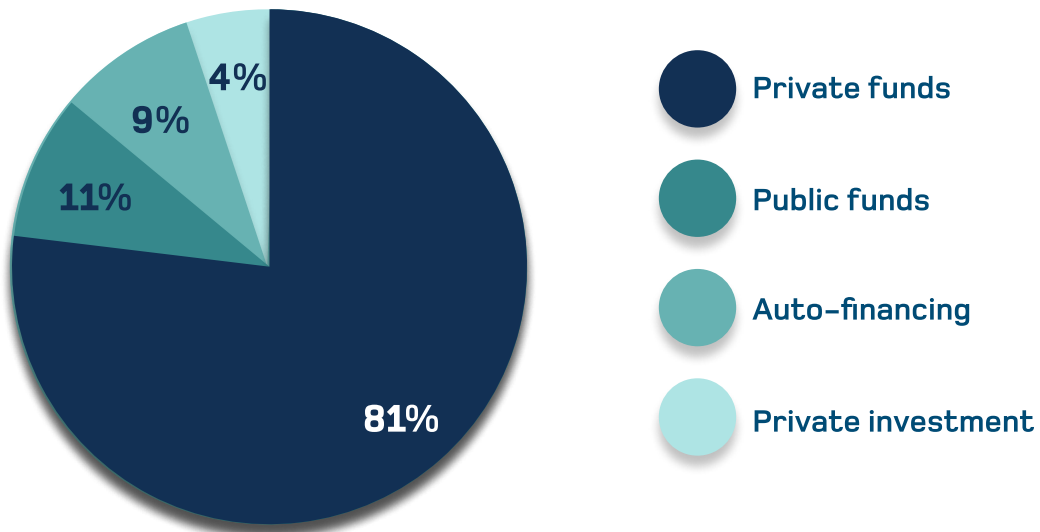


National tour to present our educational tools to the general public in the fall of 2023 with Santé publique France.

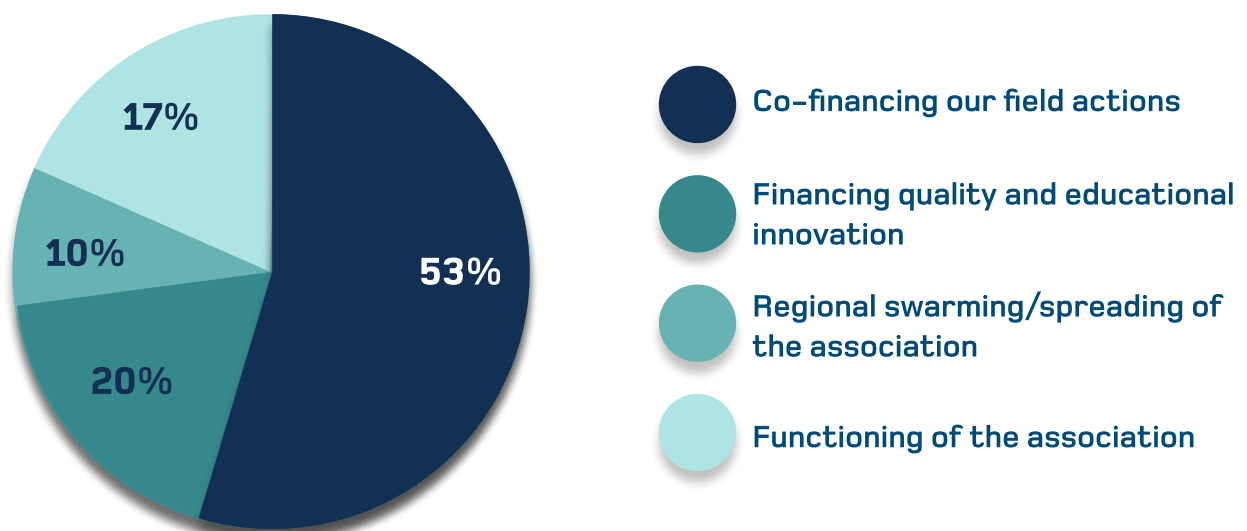


## SOURCES OF INCOME

### NOS SOURCES DE REVENUS



### NOS AXES DE DÉPENSES





# SPONSORSHIP AND COUNTERPARTS

## DES CONTREPARTIES ADAPTÉES À VOS ATTENTES

- ⚙ Individualised benefits adapted to your expectations :
- ⚙ Visit of the First 1000 days' House,
- ⚙ Invitation to our congresses and conferences,
- ⚙ Access to our educational resources,
- ⚙ Communication with our communities,
- ⚙ ⚙ ⚙ Etc...





# THEY ALREADY SUPPORT US

## STRATEGIC PARTNERS



## INSTITUTIONAL PARTNERS



## RESEARCH & TERRITORIAL PARTNERS







**THANK YOU FOR YOUR SUPPORT !**

**FOR MORE INFORMATION YOU CAN CONTACT :**

**Nathalie CASSO-VICARINI**

*Co-founder and General Delegate*

[nathalie.vicarini@eduensemble.org](mailto:nathalie.vicarini@eduensemble.org)

**Didier BODEL**

*Co-founder and Treasurer*

[didier.bodel@eduensemble.org](mailto:didier.bodel@eduensemble.org)



SCAN ME

[eduensemble.org](https://eduensemble.org)



SCAN ME



SCAN ME



SCAN ME



SCAN ME



SCAN ME



**Ensemble for Early Childhood**

37, allée du Forum

92100 BOULOGNE-BILLANCOURT

01.71.22.71.00

<https://eduensemble.org/>